



*****Best Luxury container at this size
for the price*****

Get this while you can at this fantastic
price!

The package comes with a total of 2 bedrooms 1 baths with a 3 car garage and consists of a Main house which has 2 bedrooms and 1 bath

These units come with Kitchen, Bathroom & Bedroom

Save set-up time & save money! Built from scratch using New ISO shipping Containers. Unit is blast painted with your choice of color. It comes fully insulated, wired with plumbing. Interior is finished with modular cabinets installed and all furnishings. This house package is your shipping container house full Turnkey solution!

Basics: MAIN HOUSE

960 Sq Ft Container Home= Length: 40 ft, Width: 8 ft , Height : 9.5ft

2 Bed Room

1 Bathroom/w shower

1 Kitchen

1 Living Room

Basics: CAR GARAGE

600 sqft **3** Car Garage= Length :30ft x Width : 20ft x Height: 8.8 ft

Metal Frame Hot Dipped Galvanized Steel

Powder Coated

Heat Treated Steel Body

1/10 inch Color Board

Triple Roller Door

W41-Wind Rating

20 Year Warranty

Other Features:

1. Composite floor covering
2. Insulated Framed doors & Windows
3. Distribution boxes with breakers
4. Expanded Polystyrene foam insulated throughout
5. Wall Panel-EPS,Rock Wool, Glass Wool, PU Sandwich Panel

Specifications

STRUCTURE

Modified from 1 * **40ft HC New** ISO Standard Shipping Container

Composite Cladding

FLOOR

1 inch Waterproof plywood (basic marine container Floor)

3/4 inch composted wood floor

Solid wood skirting

Bathroom: Ceramic floor and wall tile decoration, water proof treatment

WALL

Light steel structure

4 inch polyurethane as insulation

1/3 inch plaster board as walls and painted by ICI

CEILING

Light steel frame

4 inch polyurethane as insulation core

1/3 inch plasterboard as walls and painted by ICI

DOORS AND WINDOWS

Aluminium alloy sliding double glass door and window

Strong and sturdy

TOILET

Cabinet wash basin, faucet and mirror

Toilet, shower with shower head (hot and cold water system)

Hook, towel rack, paper holder

CONFIGURATION AND FITTINGS

Wardrobe and locker

Kitchen sink and tap

Bed, sofa, wardrobe

ELECTRICAL ITEMS

Distribution boxes with breakers

Cable, led lights

Water supply and drainage piping system(hot and cold water system)

Construction

Made of Corten steel- New 40ft HC Shipping Container

Uses

Can be use as accommodation, living house, office, guest house, study, rental home(Airbnb)

Advantage

1. **Anti-rust**
2. **Waterproofing**
3. **Fire Resistant**
4. **Earthquake Resistant**
5. **Simple Placement on foundation**
6. **Hurricane Resistant**
7. **Fast installation**

ServiceSupport

- (1) Provide production schedule for clients
- (2) Provide packing-list and installation instruction for clients before shipping

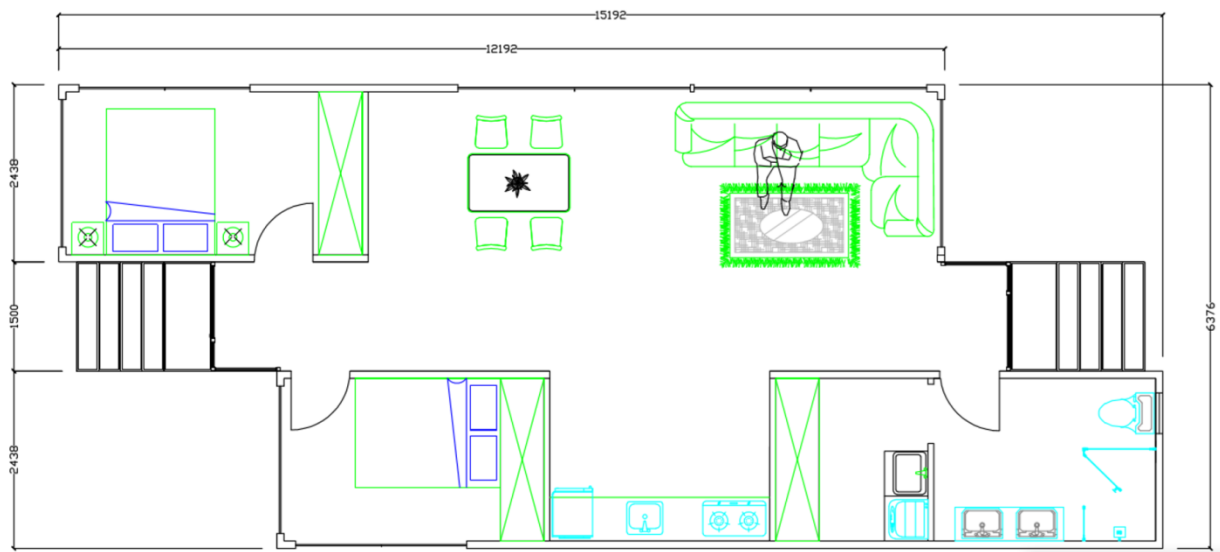
Benefits Of a Container

- **Environmentally friendly/weather resistant:** Structurally strong and weatherproof, shipping/freight containers are an ideal base from which to construct a habitable space, without placing the same burden on the environment as conventional construction methods.
-
- **Time:** Construction time on-site can be as little as seven days to fully weatherproofed condition.
-

- **Footprint:** Having a smaller footprint means container homes are lower-maintenance, require less energy, are more flexible in where they can be built and minimize waste compared to traditional homes and construction methods.

A container home is just one example of the trend towards innovation to meet our changing housing needs. Investigating such options and their environmental, financial , operational benefits and drawbacks when looking to build a new home, could help you on your way to creating your dream home!















About US

SustainArch Development, Inc. is engaged in the design and production of various types of prefabricated & modular homes. Our products possess aesthetic beauty. They are hurricane and earthquake resistant. They can be installed much faster and are extremely durable. We always focus on our customer's needs and have designed the best solution for our homes and brought them to the public. We have other models you can choose from on our website. Check us out at www.sustainarchdevelopment.com . Check under 'Modular' for our newest models. Call us!

In order to save money and increase efficiency on delivery time , we offer limited customization. Our products are- " Ready For Order Now" and ready to be**placed on your lot**. Due to increased response to our product line, build time is now 60 days. Delivered Within in 30 days of Completion. A regular ON-SITE build would normally take 6 -12 months ! A 50% deposit is required now. 40% due at Permit Phase.

We will contact your local building department, so your unit will be delivered PERMIT READY. Your building department will do an inspection and your permit will be issued. The remaining 10% is due 5 days before shipping.

***Financing is available! 50% Down 6 %
Interest 10 Yrs***

Visit www.SustainArchDEvelopment.com to request Brochures , FAQ's and View our Virtual Walk-throughs
Get a Free Shipping Container!

\$3,475 Value!!

Price	\$121,500			